

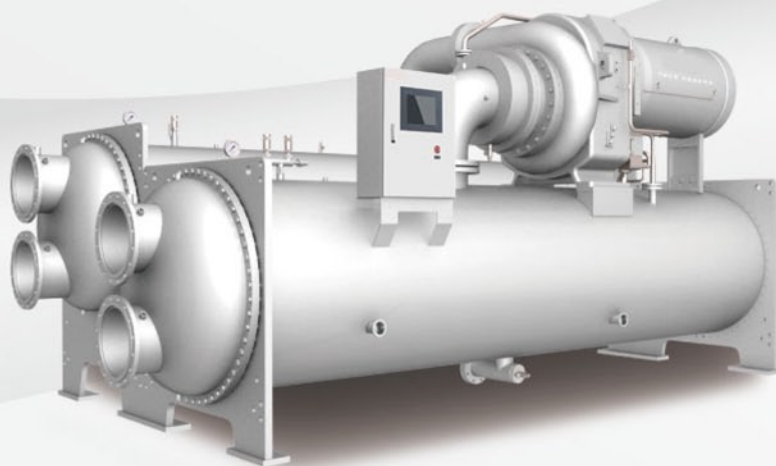


COMMERCIAL & RESIDENTIAL AIR CONDITIONING PRODUCTS

Commercial Air Conditioners



WATER COOLED CENTRIFUGAL CHILLER



Capacity

350RT-1700RT

single stage

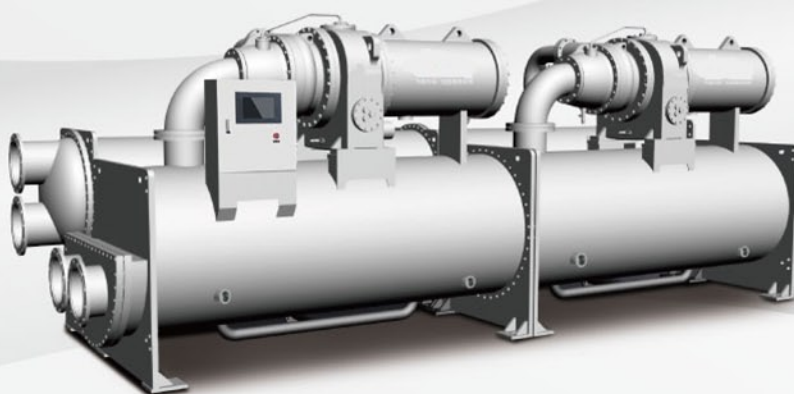
1200RT-2000RT

dual stages

R134a gas

single compressor

- Semi-Hermetic refrigerant-cooled motor 50Hz/60Hz
- Inlet guide vane plus adjustable diffuser capacity adjustment from 10%--100% without stall and surge
- Gear drive compressor low noise and vibration
- Micro-Tech controller with PLC and touchable screen
- Open protocol RS485 BMS compatible



Capacity

1000RT-4000RT

dual compressors

R134a gas

- Semi-Hermetic refrigerant-cooled motor 50Hz/60Hz
- Inlet guide vane plus adjustable diffuser capacity adjustment from 10%--100% without stall and surge
- Gear drive compressor low noise and vibration
- Micro-Tech controller with PLC and touchable screen
- Open protocol RS485 BMS compatible

WATER COOLED SCREW CHILLER(DX)

Capacity

37RT-245RT
single compressor
R22 gas



- Semi-Hermetic refrigerant-cooled motor 50Hz/60Hz
- Direct drive screw compressor
- Direct expansion evaporator with stable performance
- Micro-Tech controller with PLC and touchable screen
- Open protocol RS485 BMS compatible

Capacity

275RT-488RT
dual compressors
R22 gas



- Semi-Hermetic refrigerant-cooled motor 50Hz/60Hz
- Direct drive screw compressor
- Direct expansion evaporator with stable performance
- Micro-Tech controller with PLC and touchable screen
- Open protocol RS485 BMS compatible

WATER COOLED SCREW WITH HEAT RECOVERY UNIT

Capacity

37RT-245RT
single compressor
R22 gas
Heat recovery type



- Semi-Hermetic refrigerant-cooled motor 50Hz/60Hz
- Direct drive screw compressor
- Direct expansion evaporator with stable performance
- Micro-Tech controller with PLC and touchable screen
- Open protocol RS485 BMS compatible
- Hot water temperature from 35 to 60 degree C

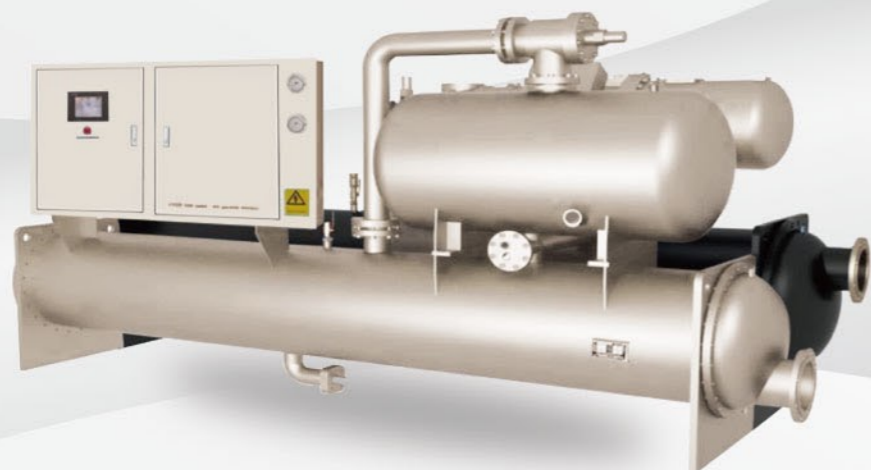
Capacity

275RT-488RT
dual compressors
R22 gas
Heat recovery type



- Semi-Hermetic refrigerant-cooled motor 50Hz/60Hz
- Direct drive screw compressor
- Direct expansion evaporator with stable performance
- Micro-Tech controller with PLC and touchable screen
- Open protocol RS485 BMS compatible
- Hot water temperature from 35 to 60 degree C

WATER COOLED SCREW CHILLER(FLOODED)



Capacity

97RT-213RT
single compressor
R134a gas

- Semi-Hermetic refrigerant-cooled motor 50Hz/60Hz
- Direct drive screw compressor
- Flooded evaporator with high efficiency
- Micro-Tech controller with PLC and touchable screen
- Open protocol RS485 BMS compatible



Capacity

235RT-427RT
dual compressors
R134a gas

- Semi-Hermetic refrigerant-cooled motor 50Hz/60Hz
- Direct drive screw compressor
- Flooded evaporator with high efficiency
- Micro-Tech controller with PLC and touchable screen
- Open protocol RS485 BMS compatible

AIR COOLED SCREW CHILLER



Capacity

100 RT single
compressor
R134a

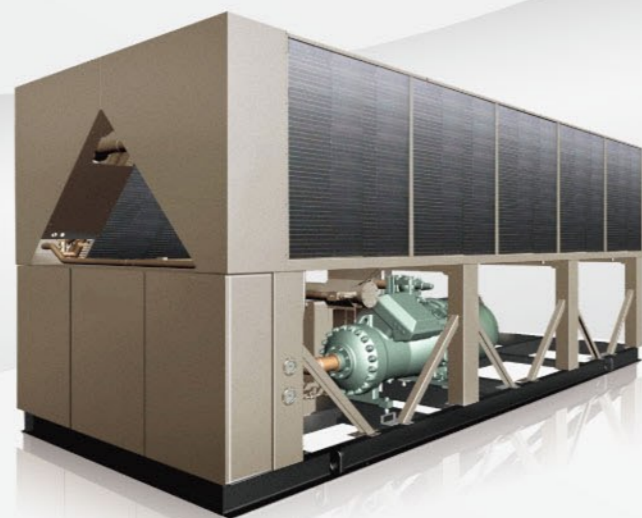
- Semi-Hermetic refrigerant-cooled motor 50Hz/60Hz
- Direct drive screw compressor
- Direct expansion evaporator with stable performance
- Micro-Tech controller with PLC and touchable screen
- Open protocol RS485 BMS compatible



Capacity

130 RT single
compressor
R134a

- Semi-Hermetic refrigerant-cooled motor 50Hz/60Hz
- Direct drive screw compressor
- Direct expansion evaporator with stable performance
- Micro-Tech controller with PLC and touchable screen
- Open protocol RS485 BMS compatible



Capacity

170 RT single
compressor

R134a

- Semi-Hermetic refrigerant-cooled motor 50Hz/60Hz
- Direct drive screw compressor
- Direct expansion evaporator with stable performance
- Micro-Tech controller with PLC and touchable screen
- Open protocol RS485 BMS compatible



Capacity

228RT single
compressor

R134a

- Semi-Hermetic refrigerant-cooled motor 50Hz/60Hz
- Direct drive screw compressor
- Direct expansion evaporator with stable performance
- Micro-Tech controller with PLC and touchable screen
- Open protocol RS485 BMS compatible



Capacity

205RT dual
compressors

R134a

- Semi-Hermetic refrigerant-cooled motor 50Hz/60Hz
- Direct drive screw compressor
- Direct expansion evaporator with stable performance
- Micro-Tech controller with PLC and touchable screen
- Open protocol RS485 BMS compatible



Capacity

256RT dual
compressors

R134a

- Semi-Hermetic refrigerant-cooled motor 50Hz/60Hz
- Direct drive screw compressor
- Direct expansion evaporator with stable performance
- Micro-Tech controller with PLC and touchable screen
- Open protocol RS485 BMS compatible

AIR COOLED SCREW CHILLER (TROPICAL TYPE)



Capacity

100RT single
compressor
R134a
Tropical condition
available

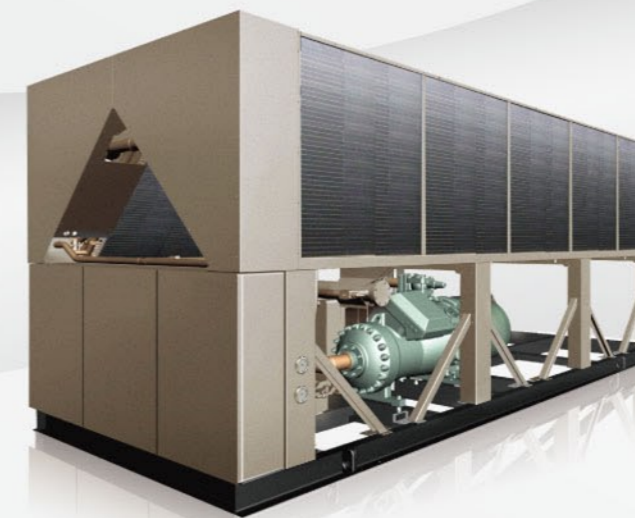
- Semi-Hermetic refrigerant-cooled motor 50Hz/60Hz
- Direct drive screw compressor
- Direct expansion evaporator with stable performance
- Micro-Tech controller with PLC and touchable screen
- Open protocol RS485 BMS compatible



Capacity

130 RT single
compressor
R134a
Tropical condition
available

- Semi-Hermetic refrigerant-cooled motor 50Hz/60Hz
- Direct drive screw compressor
- Direct expansion evaporator with stable performance
- Micro-Tech controller with PLC and touchable screen
- Open protocol RS485 BMS compatible



Capacity

170 RT single
compressor
R134a
Tropical condition
available

- Semi-Hermetic refrigerant-cooled motor 50Hz/60Hz
- Direct drive screw compressor
- Direct expansion evaporator with stable performance
- Micro-Tech controller with PLC and touchable screen
- Open protocol RS485 BMS compatible



Capacity

205RT dual
compressors
R134a
Tropical condition
available

- Semi-Hermetic refrigerant-cooled motor 50Hz/60Hz
- Direct drive screw compressor
- Direct expansion evaporator with stable performance
- Micro-Tech controller with PLC and touchable screen
- Open protocol RS485 BMS compatible



Capacity

228RT single
compressor
R134a
Tropical condition
available

- Semi-Hermetic refrigerant-cooled motor 50Hz/60Hz
- Direct drive screw compressor
- Direct expansion evaporator with stable performance
- Micro-Tech controller with PLC and touchable screen
- Open protocol RS485 BMS compatible



Capacity

256RT dual
compressors
R134a
Tropical condition
available

- Semi-Hermetic refrigerant-cooled motor 50Hz/60Hz
- Direct drive screw compressor
- Direct expansion evaporator with stable performance
- Micro-Tech controller with PLC and touchable screen
- Open protocol RS485 BMS compatible

AIR COOLED SCROLL CHILLER (MODULAR DESIGN)



Capacity

25/30/35kW
modular design
Cooling and
heating
Scroll compressor
R22/R410A
Tropical condition
available

- Scroll compressor 50Hz/60Hz motor
- Direct expansion double pipe evaporator with stable performance
- Micro-Tech Micro controller
- Open protocol RS485/RS232 BMS compatible
- Wired controller for standard product



Capacity

30kW new
modular design
Cooling and
heating
Scroll compressor
R410A
Normal condition
available

- Down to -10°C low ambient temperature cooling function
- Built in hydraulic module
- Remote control function
- Scroll compressor 50Hz motor
- Micro-Tech Micro controller
- Direct expansion double pipe evaporator with stable performance
- Open protocol RS485/RS232 BMS compatible
- Widely outlet water temperature:
 - ◆ Cooling: 0~17°C (0°C must add antifreeze)
 - ◆ Heating: 22~50°C
- Wired controller for standard product



Capacity

55/60/65kW
modular design
Cooling and
heating
Scroll compressor
R22/R410A
Tropical condition
available

- Scroll compressor 50Hz/60Hz motor
- Direct expansion shell and tube evaporator with stable performance
- Micro-Tech Micro controller
- Open protocol RS485/RS232 BMS compatible
- Wired controller for standard product



Capacity

60/65kW new
modular design
Cooling and heating
Digital Scroll compressor
R410A
Tropical condition
available

- Widely outlet water temperature:
 - ◆ Cooling: 0~17°C (0°C must add antifreeze)
 - ◆ Heating: 22~50°C
- Remote control function
- Digital scroll compressor 50Hz motor
- Direct expansion shell and tube evaporator with stable performance
- Micro-Tech Micro controller
- Open protocol RS485/RS232 BMS compatible
- Wired controller for standard product



Capacity

120/130kW
modular design
Cooling and
heating
Scroll compressor
R22/R410A
Tropical condition
available

- Scroll compressor 50Hz/60Hz motor
- Direct expansion shell and tube evaporator with stable performance
- Micro-Tech Micro controller
- Open protocol RS485/RS232 BMS compatible
- Wired controller for standard product



Capacity

180/200kW
modular design
Cooling and
heating
Scroll compressor
R22/R410A
Tropical condition
available

- Scroll compressor 50Hz/60Hz motor
- Direct expansion shell and tube evaporator with stable performance
- Micro-Tech Micro controller
- Open protocol RS485/RS232 BMS compatible
- Wired controller for standard product



Capacity

250kW

modular design

Cooling and heating

Scroll compressor

R410A

Tropical condition available

- Widely outlet water temperature:
 - ◆ Cooling: 0~17°C (0°C must add antifreeze)
 - ◆ Heating: 22~50°C
- Remote control function
- Scroll compressor 50Hz motor
- Direct expansion shell and tube evaporator with stable performance

- Max output capacity 2000kW after combined
- Micro-Tech Micro controller
- Open protocol RS485/RS232 BMS compatible
- Wired controller for standard product





CLIMA UNO

Via Pier Luigi Nervi, 188/G/25 - 04100 Latina (Italy)

Phone: +39 0773 629191 - Fax: +39 0773 603388

Email: info@climauno.com - www.climauno.com